



IPY Launch & SLiCA Results

SLiCA Results Workshop, March 22, 2007

Institute for Social and Economic Research, ISER,
University of Alaska Anchorage, UAA



IPY Launch & SLiCA Results

Motivation for the study

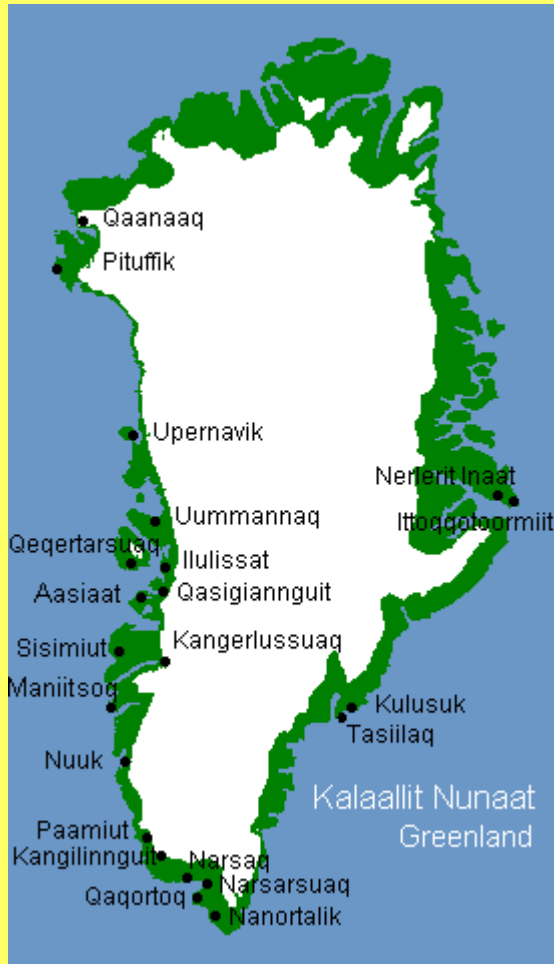
A Survey of Living Conditions in the Arctic;
Inuit, Sámi and the Indigenous Peoples of **Chukotka**

Birger Poppel

Project Chief, Survey of Living Conditions of the Arctic/SLiCA
Senior researcher, Iisimatusarfik/University of Greenland

<http://www.arcticlivingconditions.org>

Origin of the study



- 1994 Greenland living conditions survey
- Conceptual problems with traditional definitions of living conditions
- Nordic Council of Ministers grant: Inuit & Saami study

Selected Living Condition Indicators for Individuals and Households of the 1994 Greenland Living Conditions Survey

		TOWNS	SETTLEMENTS
HOUSING	Size in square meters	79 m ²	55 m ²
	% of housing units with > 1 person per room	36 %	56 %
EMPLOYMENT/ UNEMPLOYMENT	Employed	68 %	58 %
	Unemployed	12 %	21 %
EDUCATION	No vocational training	47 %	68 %
INCOME	Gross household income	241,000 DKK	143,000 DKK

Emerging Questions

- Why do people, if they are able to move, prefer living in places where living conditions measured by traditional indicators are poorer?
- If staying in more remote areas and in harsh climates is a consequence of a choice, which are the main reasons/ priorities - and how do we measure them?

Partnerships Led to Measurement Development

- Began with collaboration of economists, anthropologists, sociologists, political scientists and other social science disciplines
- Formed national indigenous steering committees
- Direct involvement of indigenous steering committee members with multidisciplinary team

***The process of defining indicators of living conditions:
From a paternalist to a democratic/inclusive approach***

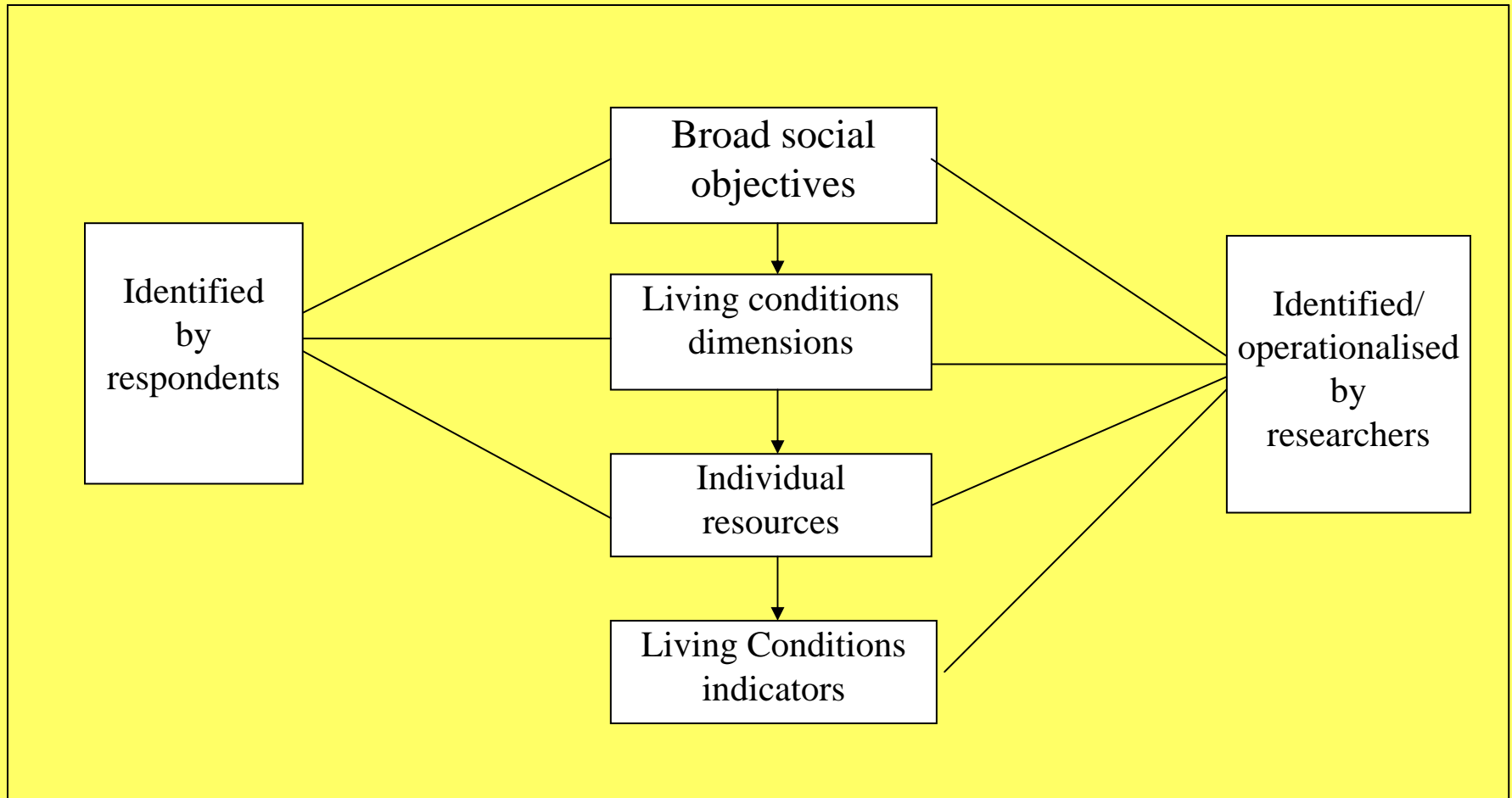
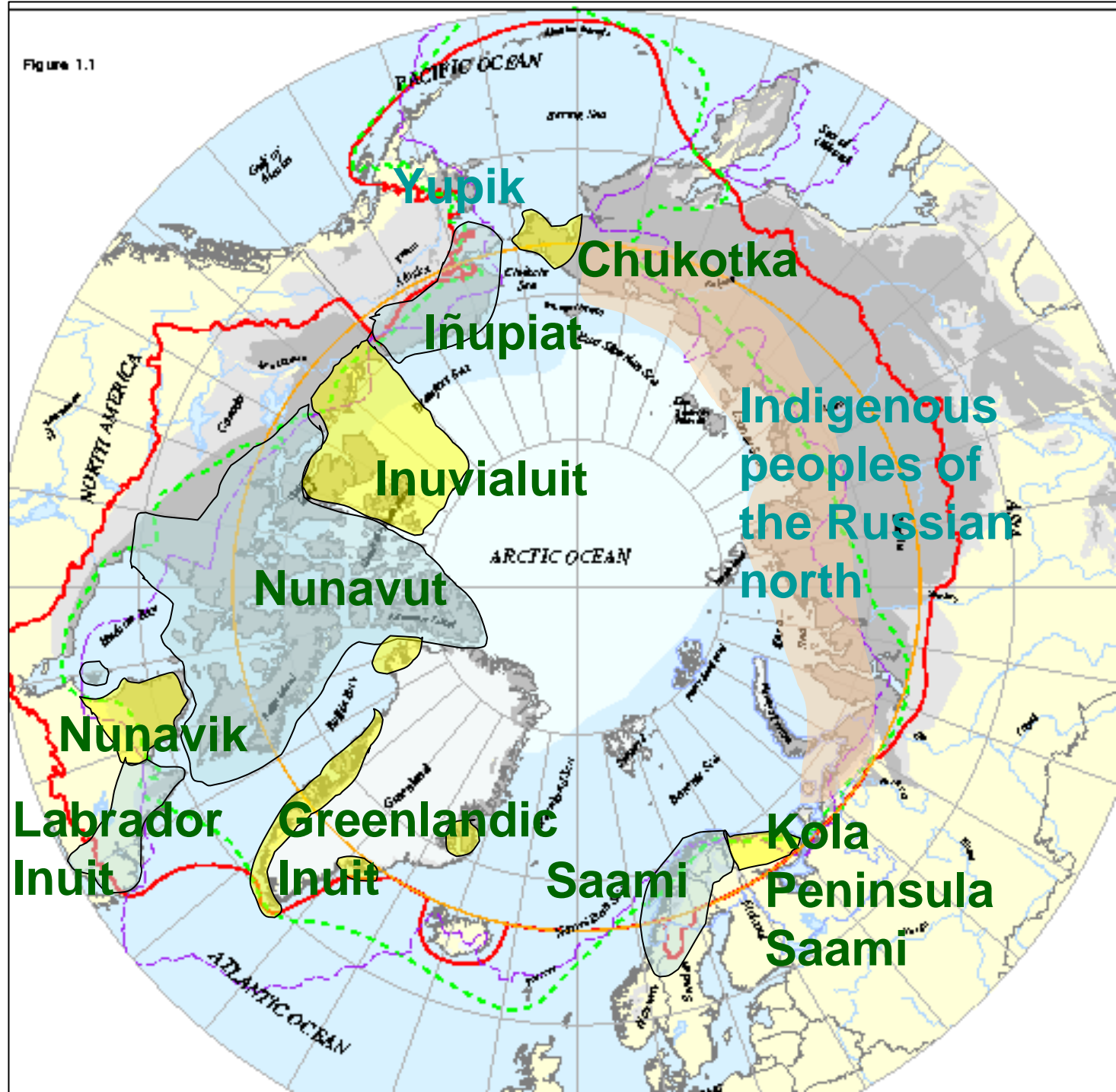


Figure 1.1



**The Arctic -
Homeland of the
Inuit: Alaska,
Canada,
Greenland,
Chukotka;**

**The Saami
peoples: Fenno-
Scandinavia and
Kola Peninsula;
and,**

**Almost 30
indigenous
peoples of
Northern Russia**

Yupik

Chukotka

Iñupiat

Inuvialuit

Nunavut

Nunavik

Labrador Inuit

Greenlandic Inuit

Saami

Kola Peninsula Saami

Indigenous peoples of the Russian north

SLiCA objectives

- To achieve a collaboration of researchers and Arctic indigenous peoples interested in living conditions in the Arctic.
- To extend the field of living conditions research to include dimensions most relevant to Arctic peoples.
- To compare living conditions in different regions of the Arctic.
- To advance our understanding of the relationships between policies, individual resources, and living conditions.
- To provide local, regional, national, and international organisations an improved basis for decision-making.

SLiCA's definition of living conditions

The individual possession of resources in the form of money, goods, services, mental and physical energy, social relations, physical security etc. by means of which the individual person may control and consciously direct his/her living conditions in so far as the necessary arenas are available.

*And the goal is ultimately to get a picture of the **individual well-being***

Dimensions of Living Conditions measured in SLiCA

- Household production
 - Hunting, fishing, gathering
 - Employment
- Housing
- Health
- Political resources
- Education
 - Formal
 - Traditional

- Environment
- Expenditures & income
- Language
- Identity
- Cultural values
- Social relationships
- Community resources
- Subjective well-being

IPY is opening new doors



10 Years after – Developing research initiatives and opportunities

- SLiCA - Remote Access Analysis System, RAAS
- Arctic Social Indicator Project (ASI)
- The Economy of the North (ECONOR)
- ArcticStat
- Understanding Migration in the Circumpolar North (MNCN)

You can get more information at:

www.arcticlivingconditions.org



A Survey of Living Conditions in the Arctic; Inuit, Sámi and the Indigenous Peoples of Chukotka

<http://www.arcticlivingconditions.org>